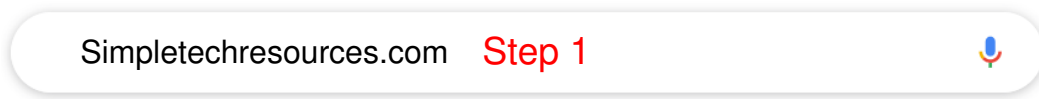


Tool Set Download Guide

SimpleTech Resources

1. Type: *Simpletechresources.com* into your web browser search bar and press enter.



2. Click the "Download Center" link at the top right of the home page.

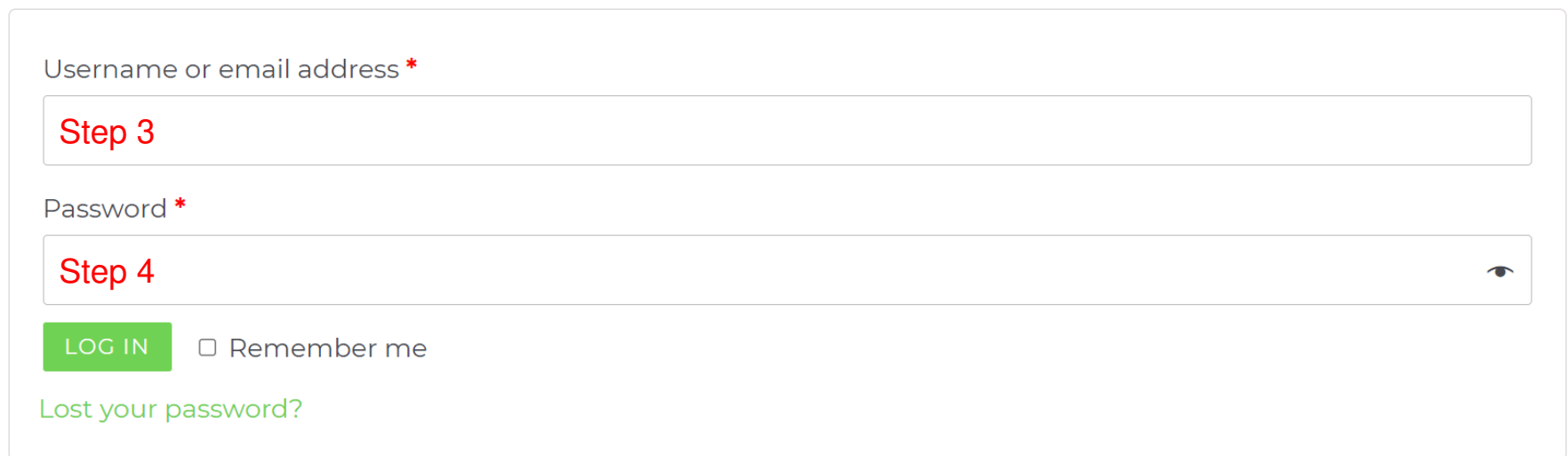


3. Enter the username or email address that was used when purchasing the tool set(s).

4. Enter the password provided with the order confirmation email.

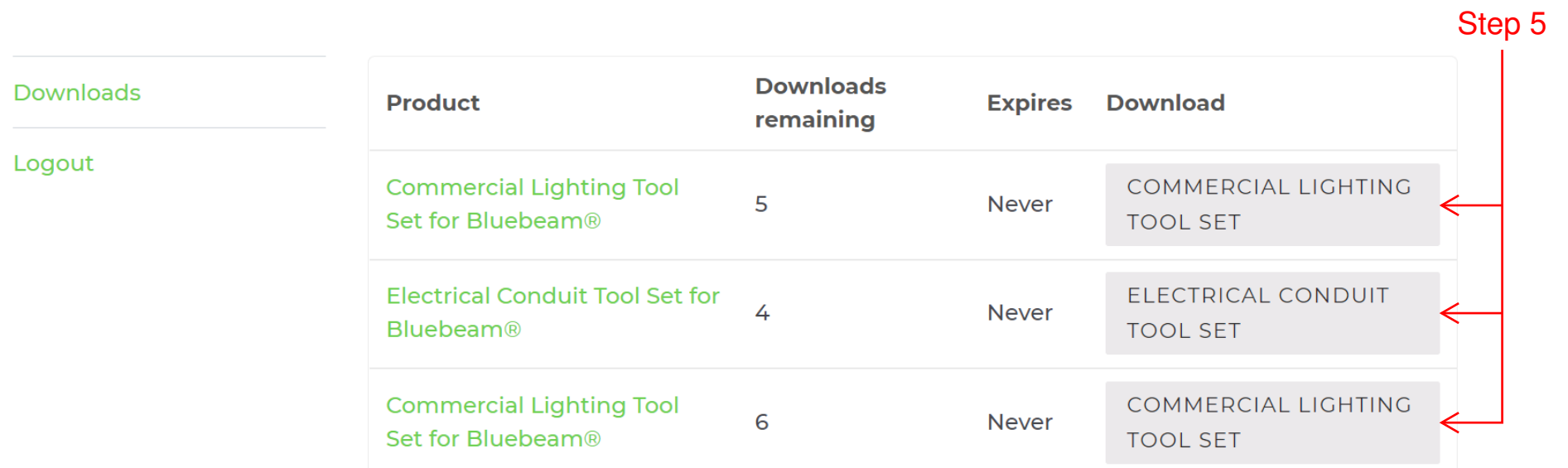
*If you have lost your password, click on "Lost your password?" and a reset link will be sent to you.

Login

A screenshot of the login form. It includes a 'Username or email address' field with 'Step 3' entered, a 'Password' field with 'Step 4' entered, a 'LOG IN' button, a 'Remember me' checkbox, and a 'Lost your password?' link.

5. Select any button that has downloads remaining and the tool set will begin downloading immediately.

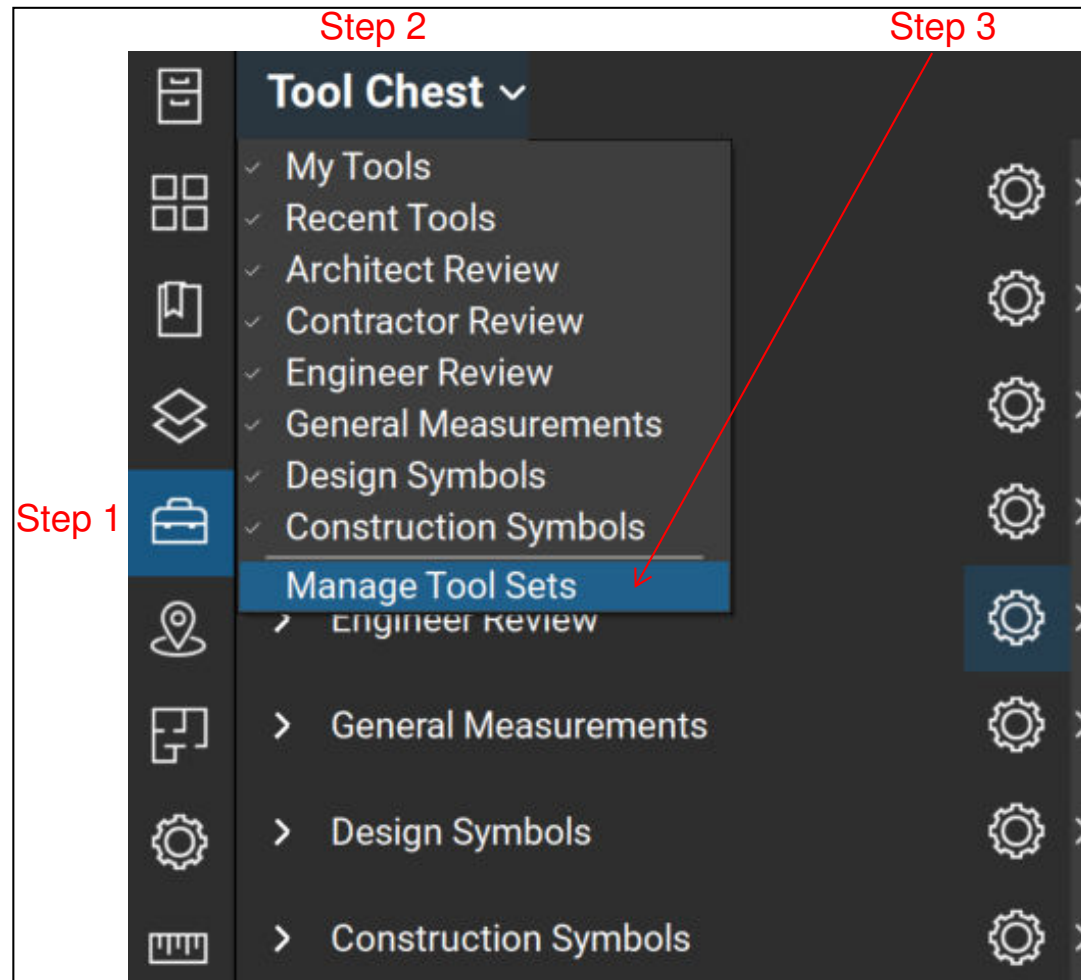
* Zip file will automatically be saved in your "Downloads" folder on your PC.

A screenshot of the Downloads table. The table has columns for Product, Downloads remaining, Expires, and Download. Three rows are shown, each with a download button. Red arrows point to the download buttons, and the text 'Step 5' is written in red in the top right corner. On the left side, there are links for 'Downloads' and 'Logout'.

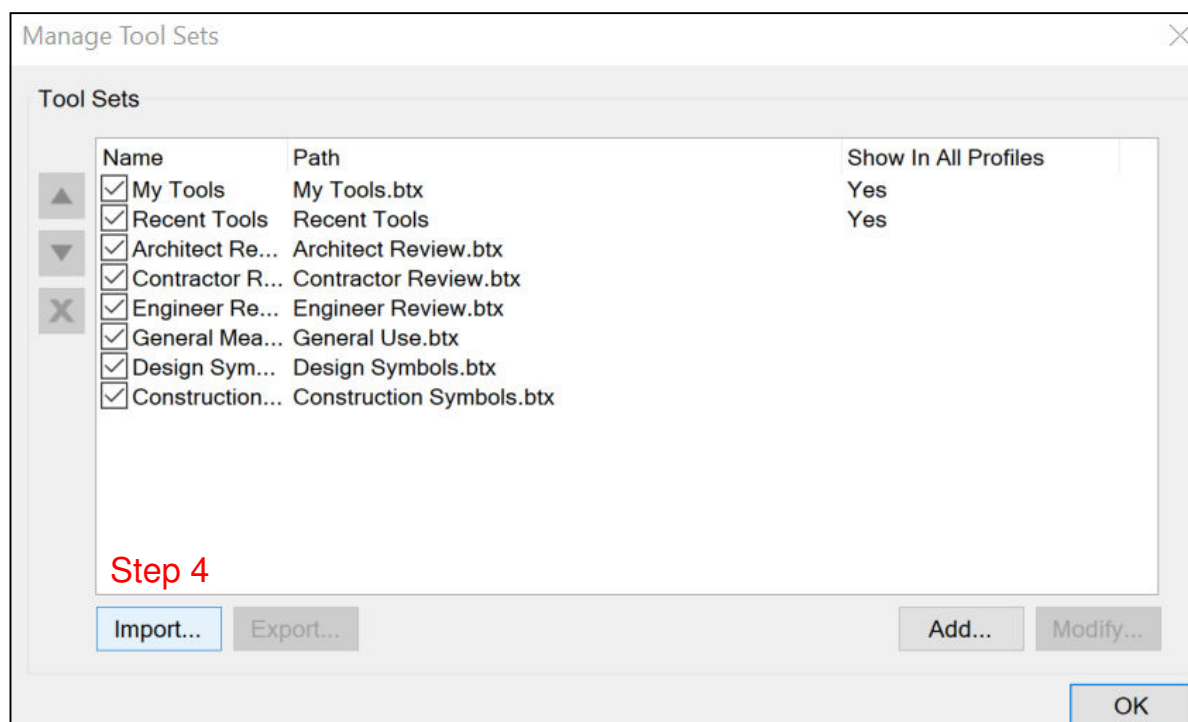
Tool Set Installation Guide

SimpleTech Resources

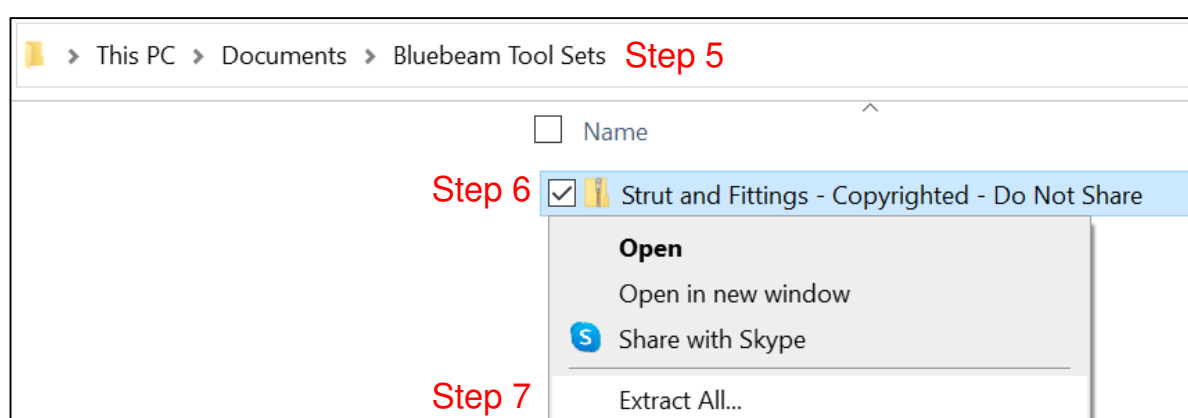
1. While in Bluebeam® Revu® open the Tool Chest Pane
2. Left click on the words, "Tool Chest" at the top of the pane
3. Left click on "Manage Tool Sets" at the bottom of the list



4. Select "Import" from the Manage Tool Sets pop-up window



5. Navigate to the location on your PC where a downloaded tool set is saved.
6. Right click on the downloaded compressed folder to open the drop-down menu
7. Unzip the compressed folder to access each tool set by selecting "Extract All"



Tool Set Installation Guide

SimpleTech Resources

- Left click once on any tool set (BTX file) to select it.
- Click the open button at the bottom right of the window and the tool set will appear in your current profile

